

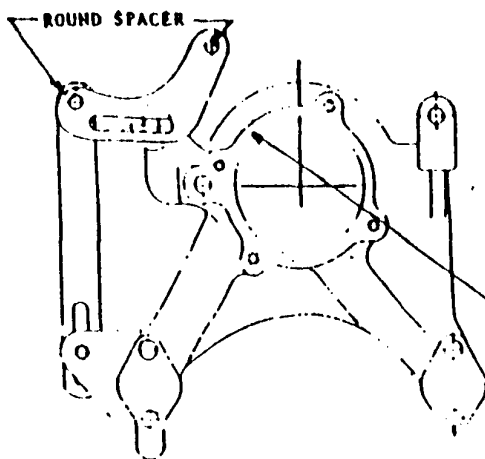
ZIP'S WATER PUMP HOUSING INSTALLATION INSTRUCTIONS

1. REMOVE OLD WATER PUMP — CLEAN GASKET SURFACES
2. BOLT NEW HOUSING IN PLACE (DON'T FORGET GASKETS)
3. BOLT ON 6 CYL WATER PUMP WITH 3/4" FLANGE TO FLANGE (SEE PHOTO)
4. PLACE ALTERNATOR IN MOUNTING EARS — SECURE WITH BOLT
5. BOLT 2 SADDLE BRACKETS TO SANKYO COMPRESSOR. PLACE ROUND SPACER AND ADJUSTOR BRACKET ON OUTSIDE BOLT AS IN DRAWING. SET SADDLE IN PLACE ON MOUNTING LUG. SLIP PIVOT BOLT IN WITH THREADS TO THE FRONT. THIS BOLT IS ALSO THE PIVOT BOLT FOR THE ALTERNATOR ADJUSTOR BRACKET.
6. MODIFY AN ALTERNATOR ADJUSTOR BRACKET TO SHAPE OF PATTERN ON EDGE OF THIS PAPER. (FOR A.C. ONLY)

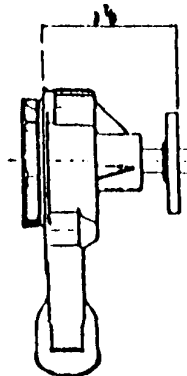
HARDWARE NEEDED

1 CHEVROLET 6 CYL. WATER PUMP 1963 TO 1976. IF NO HEATER IS USED
RUN HEATER HOSE FROM 6 CYL PUMP BACK TO CYL. HEAD BETWEEN # 6 AND 8 CYL. (BY PASS)

4-3/8" 16 X 2-1/4"	2-5/16" 18 X 3/4"	1-3/8" 16 X 2-3/4"
2-3/8" 16 X 5"	2-5/16" 18 X 1-1/2"	1-3/8" 16 X 4"
(FOR A.C. ONLY)	3-3/8" X 16 PLASTIC LOCK NUTS	1-3/8" 16 X 3/4"



IMPORTANT
BLEED TRAPED AIR
FROM THIS SCREW.
BEFORE STARTING
ENGINE. USE SEALER
AND REPLACE.



160° THERMOSTAT RECOMENDED

RECOMENDED PARTS

WITH A SANKYO (SD 608) COMPRESSOR

FOR 6" PULLEY USE DAYCO BELT# 15670

FOR 5" PULLEY USE DAYCO BELT# 15666

WITH PROPER PULLEYS RECOMENDED USE DAYCO BELT
15620 FOR ALTERNATOR.

LOWER PULLEY - 7 1/4" DIA. DOUBLE VEE

3. BOLT ON 6 CYL WATER PUMP WITH 3/4" FLANGE TO FLANGE (SEE PHOTO)
4. PLACE ALTERNATOR IN MOUNTING EARS — SECURE WITH BOLT
6. BOLT 2 SADDLE BRACKETS TO SANKYO COMPRESSOR. PLACE ROUND SPACER AND ADJUSTOR BRACKET ON OUTSIDE BOLT AS IN DRAWING. SET SADDLE IN PLACE ON MOUNTING LUG. SLIP PIVOT BOLT IN WITH THREADS TO THE FRONT. THIS BOLT IS ALSO THE PIVOT BOLT FOR THE ALTERNATOR ADJUSTOR BRACKET.
8. MODIFY AN ALTERNATOR ADJUSTOR BRACKET TO SHAPE OF PATTERN ON EDGE OF THIS PAPER. (FOR A.C. ONLY)

HARDWARE NEEDED

1 CHEVROLET 6 CYL. WATER PUMP 1963 TO 1975. IF NO HEATER IS USED
 RUN HEATER HOSE FROM 6 CYL PUMP BACK TO CYL. HEAD BETWEEN # 6 AND 8 CYL. (BY PASS)

4-3/8" 16 X 2-1/4"

2-5/16" 18 X 3/4"

1-3/8" 16 X 2-3/4"

2-3/8" 16 X 5"

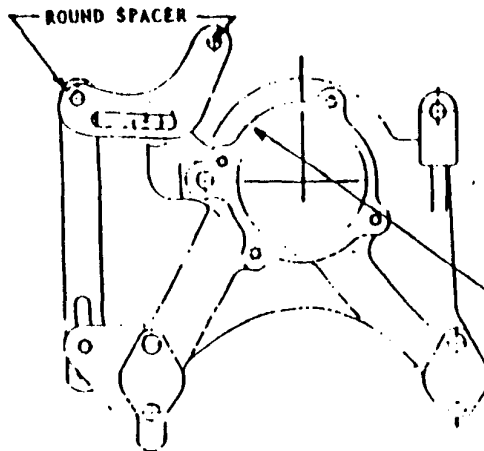
2-5/16" 18 X 1-1/2"

1-3/8" 16 X 4"

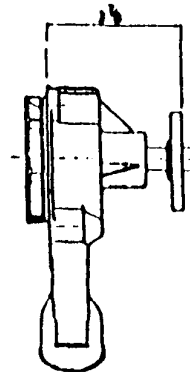
(FOR A.C. ONLY)

3-3/8" X 16 PLASTIC LOCK NUTS

1-3/8" 16 X 3/4"



IMPORTANT
 BLEED TRAPED AIR
 FROM THIS SCREW.
 BEFORE STARTING
 ENGINE. USE SEALER
 AND REPLACE.



160° THERMOSTAT RECOMENDED

RECOMENDED PARTS

WITH A SANKYO (SD 508) COMPRESSOR

FOR 6" PULLEY USE DAYCO BELT# 15570

FOR 6" PULLEY USE DAYCO BELT# 15555

WITH PROPER PULLEYS RECOMENDED USE DAYCO BELT
 # 15520 FOR ALTERNATOR.

LOWER PULLEY - 7 1/4" DIA. DOUBLE VEE
 CHEVROLET PART # 3860838

PUMP PULLEY - 6 1/4" DIA. DOUBLE VEE
 CHEVROLET PART # 3975642

CAST IRON WATER OUTLET (EVERCO No. W.2493)
 ALUM. WATER OUTLET PONTIC # 477202

ON EARLY CARS LIKE A 32 FORD A GATE
 HOSE # 20225 WILL FIT PERFECTLY

USE SMALL BLOCK V-8 PULLEYS FOR PROPER BELT ALIGNMENT

RE-PRINT FROM SERVICE MANUAL PART # 715094 (SUMMER)